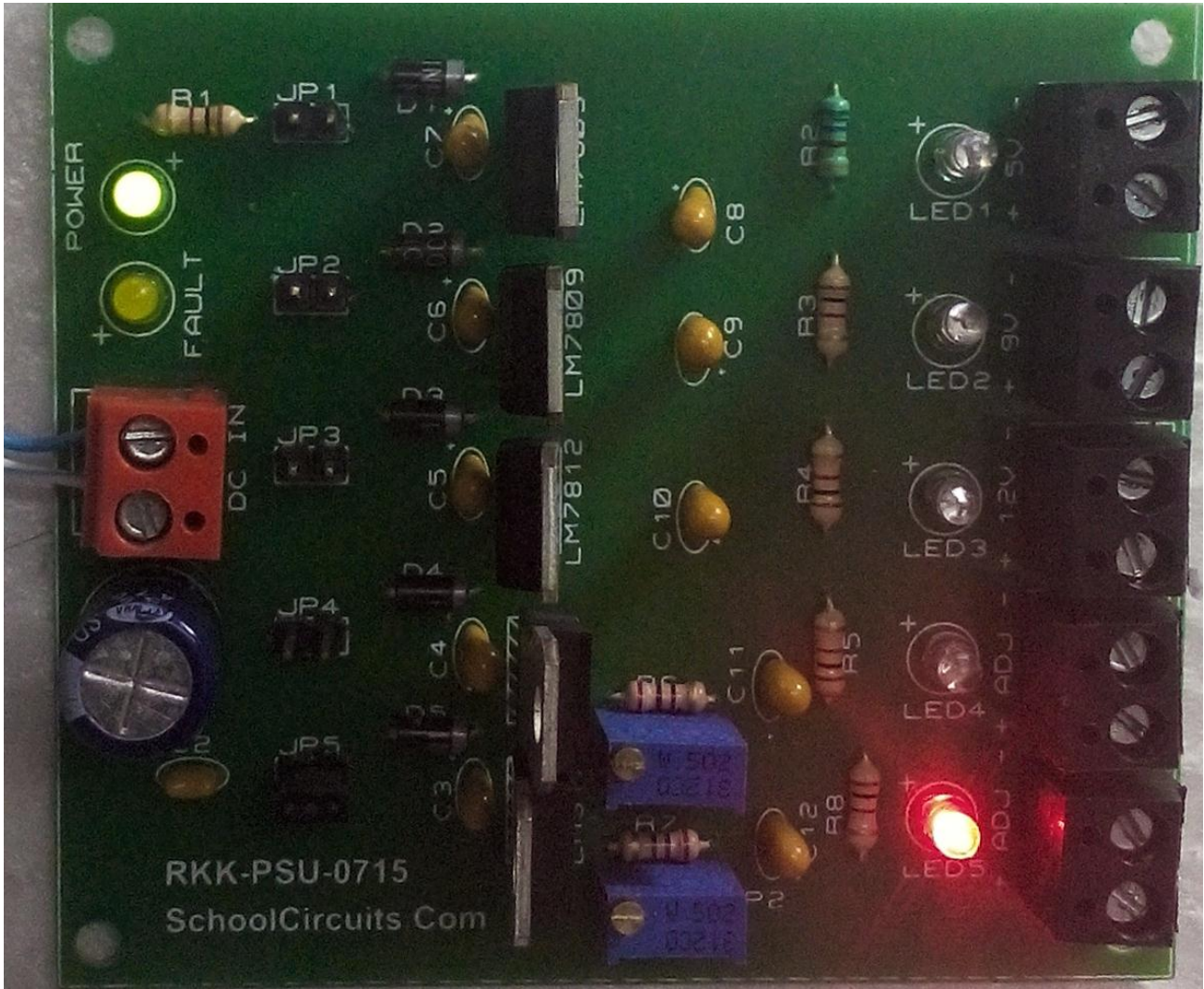
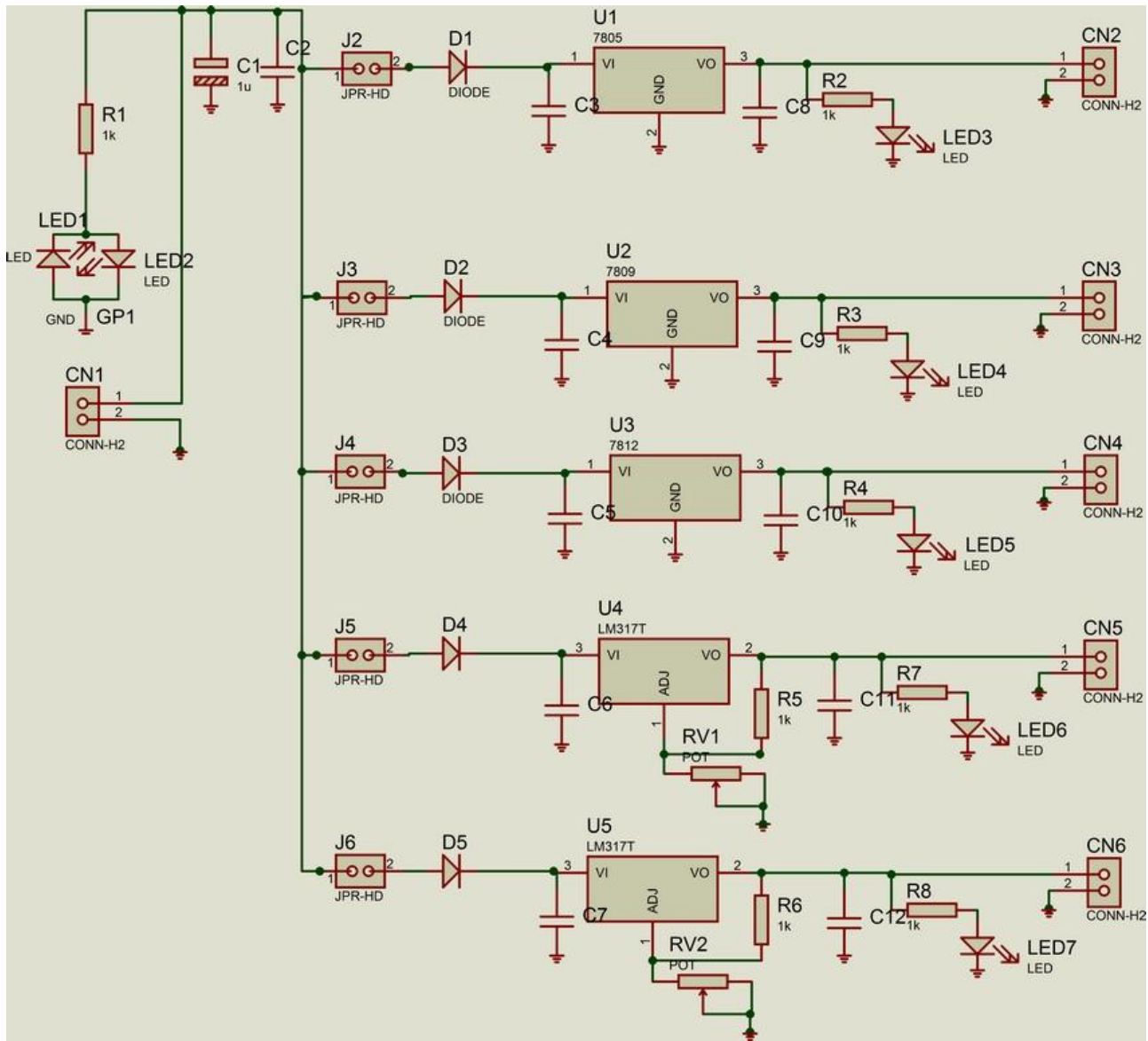


High-Quality Power Supply Unit with 5 voltage regulators





RKK-PSU-0715 Multi-purpose power supply unit project is designed to fulfil your project power-supply needs.

Circuit Design :

The circuit is built using highly popular and stable voltage regulators LM317T, 7805, 7809 and 7812. Two LM317T provides two adjustable voltage outputs you can set for various voltages upto 35V. For 5V, 9V and 12V there are one each fixed voltage regulators.

For DC input, there is Power-on indicator (reverse polarity will be indicated with "fault" LED. control.

There are jumpers for each voltage regulators. They **can be used to power on/off any regulator**. They are provided to turn off power drain of any unused regulator. Each output is provided at two-point terminals with polarity indicators. Voltage regulators come with normal short-circuit and over current protection.

Each output has on/off status LED for visual confirmation of power available on that output.

This stable multi-tasking Power Supply circuit board is very handy useful item to have on your test bench. Supplied as high-quality DIY Kit or Assembled unit. Buy with confidence !

Go through features carefully if still in doubt ☺

Features:

- 5V, 9V, 12V Fixed Voltage Regulators and **TWO** LM317T adjustable Voltage Regulators
- LM317T regulators can be set between 1.6V to 35V (Input voltage should be higher than required output voltage)
- Multi-turn hi quality adjustable resistors for **precise output voltage setting** for LM317T. Set in increment of 0.1 volt.
- Use **any one** or **all** outputs, selectable with jumpers (provided in kit)
- **Any regulator can be TURNED OFF** to **save standby current** if that regulator is not in use. Turn on regulators you actually use
- Indicator LED for power on
- Indicator LED to warn if input polarity is wrong
- 5 Indicator LEDs to show on/off status of all Voltage Regulators
- **Each** individual Voltage Regulator is **protected for reverse polarity** using rectifier diodes
- **High Quality FR4 circuit boards** with superior tinning for quality solder connections
- Kit comes with **complete circuit diagram**, component placement layout, parts list and instructions sheet
- Major parts like Voltage Regulator ICs are **tested in circuit before packing** and dispatch
- **Immediate attention and solution** for any problem you may have after purchase

For Kit users: If wired carefully observing proper polarity and using standard soldering method, there is no chance of circuit not working as each component is quality checked. For kit orders, **no replacement or refunds** are entertained as the circuit can be damaged while soldering by the user. If you are not in agreement of it, you must order wired and tested circuit boards for minor additional cost. For any return (approved by us for any reason), the cost of postage of return parcel is to be borne by the customer.